

# RotaServe Dispenser

from LEF SYSTEMS

## Automated Clean Uniform Dispensing

The RotaServe dispenser will securely dispense theatre scrub wear, uniform items, uniform accessories, aprons, towels, lab-coats and disposable items, etc.

Only authorized users with an ID-card can obtain access to clean uniforms. Combined with an optional soiled Receiver chute staff must return soiled items before they can access further clean items. The optional Receiver chute provides credit for returned items, and records a digital image of all returned items which minimizes inventory abuse.

By ensuring uniforms are only issued to authorized staff, and that they are securely returned after use, your inventory replacement costs and associated laundry costs can be controlled and minimized.

Staff will no longer be able to hoard uniforms in their locker, unauthorized staff will no longer have access, and staff that require clean uniforms can be confident of obtaining the size they require, when they need it.

The system is easily managed using our Management Software which is provided with each system. Our management software can be used to manage your entire system, staff requirements, inventory and reports.

RotaServe units are available in **Standard** and **Slimline** versions designed to locate conveniently within your facility.

## RotaServe - Standard Version

240 Scrub Set Capacity



TouchScreen Operated  
Version Shown has RFID

## RotaServe Specifications

- Compartment size 180mm high, 250mm deep, 90mm wide
- 8" user-interface display
- Works with all types of staff ID-card
- Automatically registers compartments refilled
- System management software included
- Unit colours: White, Blue, Beige or Green
- Power: 220-240v mains outlet required
- Can operate on reserve 24v battery
- **Optional:** Optional Receiver Chute for credit control
- **Optional:** RFID UHF ISO18000 operation
- **Slimline or Standard variants available - see below**

### **Slimline Unit:**

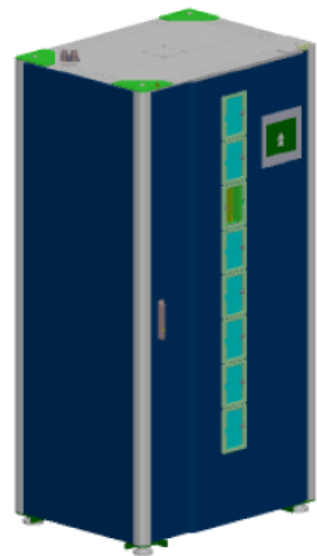
- 8 levels each of 23 compartments
- Total of **184** compartments
- Dimensions: 790mm deep, 1030mm wide, 1950mm high
- Weight: 415 kg

### **Standard Unit:**

- 8 levels each of 30 compartments
- Total of **240** compartments
- Dimensions: 1030mm deep, 1030mm wide, 1950mm high
- Weight: 500 kg



**View of Storage Compartments**



**CAD VIEW**



RotaServe is available through distributor LEF Systems  
[www.scrubserve.com](http://www.scrubserve.com)